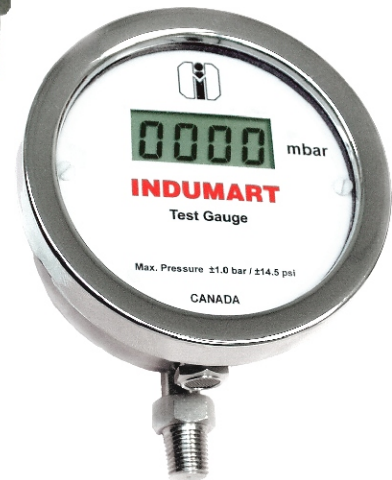
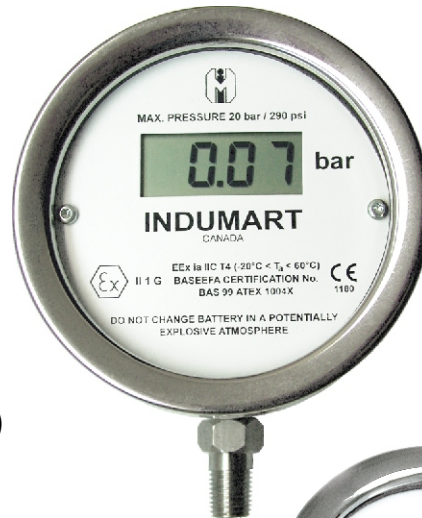




SERIES: DG50

- HIGH ACCURACY ($\pm 0.2\%$ F.S.)
- 4-DIGIT LCD DISPLAY
- STAINLESS STEEL CASE
- IP-67 PROTECTION (WATERPROOF)
- LONG BATTERY LIFE (2 AA)
- LOW BATTERY WARNING
- TEMPERATURE COMPENSATION
- DIAPHRAGM SEALS (OPTION)
- INTRINSICALLY SAFE (OPTION)
- AVAILABLE RANGES:
VACUUM TO 6000 PSI (400 BAR)



INTRODUCTION

Indumart *DG50 Series* Digital Pressure Gauges / Test Gauges are high-accuracy, high-resolution pressure indicators. Because of their robust design, these gauges meet stringent demands and can be used in critical industrial applications where particular importance is attached to measuring accuracy, reproducibility, long term stability and protection against water immersion and dust penetration.

The electronics and sensing element of the *DG50 Series* are housed in a 4" diameter, stainless steel case. The measuring element is an alumina ceramic diaphragm strain gauge, compatible with most gases and liquids. When used for food applications, the *DG50 Series* may be supplied with hygienic fittings, and for viscous or corrosive media services diaphragm seals can be included at the time of ordering.

The four-digit, 12.7 mm high LCD display can show pressure measurements in either of the two selected units of measurements. The two units of measurements are selected by the customer at the time of ordering and operators may switch between the two units at the site.

As a standard practice, all *DG50 Series* are calibrated at 20°C. If working constantly at a higher or a lower temperature, the instrument can be calibrated to the user specifications. While operating at a significant temperature range, temperature compensation will correct both zero and span drifts.

If the DG50 Pressure Gauges are to be used in potentially explosive environments specified to EEX ia IIC T4, the intrinsically safe option must be ordered for optimum safety.

SPECIFICATIONS

Accuracy	±0.2% of full scale
Case & Bezel	304 stainless steel
Case Diameter	100 mm
Display	4-digit LCD; 12.7 mm high
Sensor	Alumina ceramic (Al ₂ O ₃) diaphragm strain gauge
Connection	Back, bottom; ¼" male; St. steel
Pressure Ranges	Variable ranges: vacuum up to 6000 psi - see the table
Over Pressure	1.25 x max. pressure
Temp. Compensation	-10...+60°C
Storage Temp.	-20...+85°C
Ambient Temp.	-10...+60°C
Medium Temp.	-20...+100°C
Case Temp.	-10...+60°C
Power	3 VDC; 2 x 1.5 V "AA Cells"
Battery Life	1 year @ 2 sec. update rate
Low Power Warning	Display will alternate between pressure reading and BATT
Explosion Protection	EEx ia IIC, T4
Display Update Rate	2 sec. / 0.5 sec. - selectable
Protection Class	IP67
Weight	2 lb (900 g)

Specifications may change without prior notice

PRESSURE RANGES & PERFORMANCE SPECIFICATIONS

Code	Range†			Accuracy*
	kPa	PSI	Bar	
1	-100...+100	-14.5...+15	-1...+1	±0.25% f.s
2	0...50	0...7.5	0...0.5	±0.25% f.s
3	0...100	0...15	0...1	±0.20% f.s
4	0...200	0...30	0...2	±0.20% f.s
5	0...500	0...75	0...5	±0.20% f.s
6	0...1000	0...150	0...10	±0.20% f.s
7	0...2000	0...300	0...20	±0.20% f.s
8	0...5000	0...750	0...50	±0.20% f.s
9		0...1500	0...100	±0.20% f.s
10		0...3000	0...200	±0.20% f.s
11		0...5000	0...350	±0.20% f.s
12		0...6000	0...400	±0.20% f.s

* Accuracy includes: Linearity + Hysteresis + Repeatability

† Other available measurement units are: mm H₂O, cm H₂O, in H₂O, mm Hg, in Hg, mbar and MPa.

Above figures are for instruments operating at the calibration temperature of 20°C. While working at other temperatures, add ±0.01%/fs/°C zero drift and ±0.01%/fs/°C span drift.

ORDER CODES

DG50

Not Required (std) -

Intrinsically Safe X

Bottom Connection B

Back Connection R

Calibration Certificate C

None X

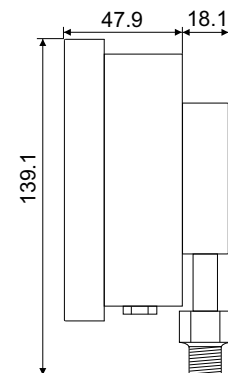
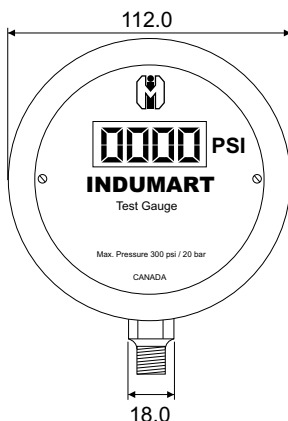
Temperature Compensation Required T

Pressure Range (code from above Table)

Units of Pressure (select two pressure units from above Table)

EXAMPLE: DG50-BXT6bar/psi

DIMENSIONS (mm)



INDUMART INC.

1-15 W. Pearce St., Richmond Hill, Ont. L4B 1H6, Canada
Phone: (905) 707-9998 Fax: (905) 707-8484 E-mail: Sales@Indumart.com