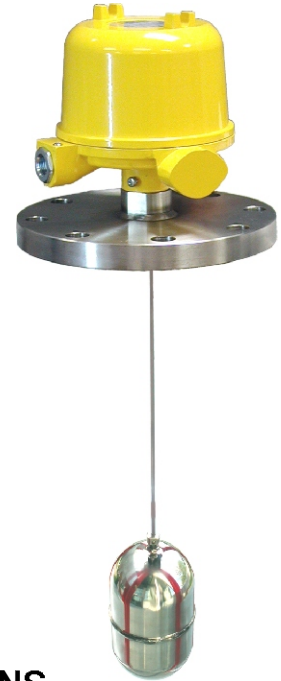




## SERIES: LSF400

- SNAP-ACTION SWITCH
- SUITABLE FOR LIQUIDS
- 0.75 MIN. SPECIFIC GRAVITY
- HEAVY-DUTY CONSTRUCTION
- ALL ST. STEEL WETTED PARTS
- HIGH PRESSURE & HIGH TEMPERATURE APPLICATIONS
- UNIQUE SWITCHING MECHANISM FOR INCREASED RELIABILITY



### INTRODUCTION

Indumart *LSF400 Series* of Vertical Magnetic Type Level Switches is designed to control liquid level in a vast variety of applications including high temperature (up to 400°C) and/or high pressure (up to 1000 psi) vessels and boilers, waste water or clean water tanks, chemical storage tanks, fuel oil or beverage tanks, etc.

Variations of liquid level in the tank would cause vertical movement of the float. This movement translates into displacement of permanent magnet connected to the floaters shaft. Movement of the permanent magnet causes the two other magnets to achieve snap-action switching without mechanical connection.

A variety of chambers may be used for side connection, if the instrument should be connected to the side of the tank.

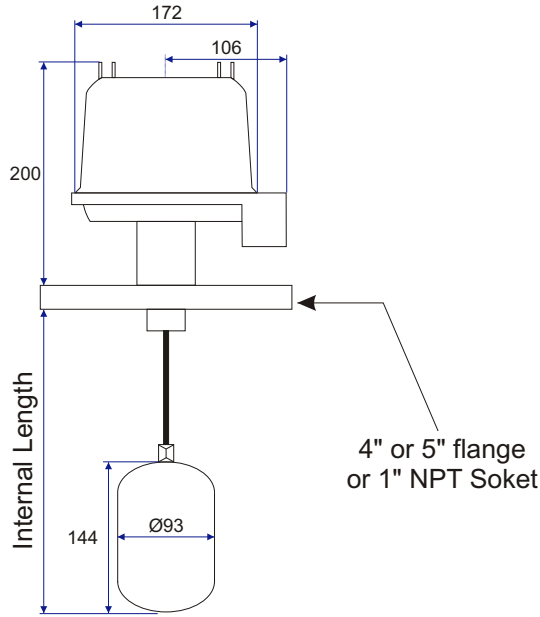
### SPECIFICATIONS

<b>Housing Material</b>	Aluminum die cast
<b>Flange or Socket</b>	Stainless steel
<b>Float/ Rod / Spacer</b>	316 stainless steel
<b>Enclosure Rating</b>	IP65 Weather Proof
<b>Application</b>	Liquid level control
<b>Specific Gravity</b>	0.75 minimum
<b>Measuring Length</b>	Up to 1500 mm
<b>Switching Differential</b>	10 mm
<b>Maximum Pressure</b>	1000 psi (70 bar)
<b>Max. Operating Temp.</b>	400°C (750°F)
<b>Output Switch</b>	1 SPDT or 2 SPDT (DPDT); Snap-action
<b>Contact Rating</b>	10A @ 250 VAC
<b>Switch Housing</b>	Ceramic
<b>Cable Gland</b>	½" or ¾" NPT

*For chamber material and length options, please see the CHAMBER SELECTION section.*

Specifications may change without prior notice.

## DIMENSIONS (mm)



## ORDER CODES

LSF400-

**SWITCH TYPE**  
 1 SPDT  
 2 SPDT (DPDT)

1  
 2

**WETTED PARTS**  
 SS 304  
 SS 316

1  
 2

**PROCESS CONNECTION**  
 1" NPT Socket  
 ANSI 4" - 150# RF Flange  
 ANSI 5" - 150# RF Flange  
 Other (please specify)

1  
 4  
 5  
 X

**CONDUIT CONNECTION**  
 1/2" NPT  
 3/4" NPT

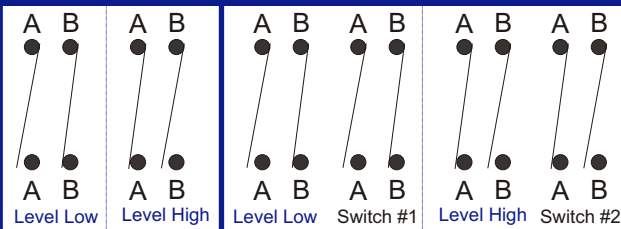
1  
 2

**INTERNAL LENGTH**  
 (Please specify)

## SWITCHING DIAGRAM

1 Switch

2 Switches



## ORDER CODES (CHAMBER)

CH-

**TYPE OF CHAMBER**  
 Side - Side (S. W.)  
 Side - Side (flange)  
 Side - Bottom (S. W.)  
 Side - Bottom (flange)

1  
 2  
 3  
 4

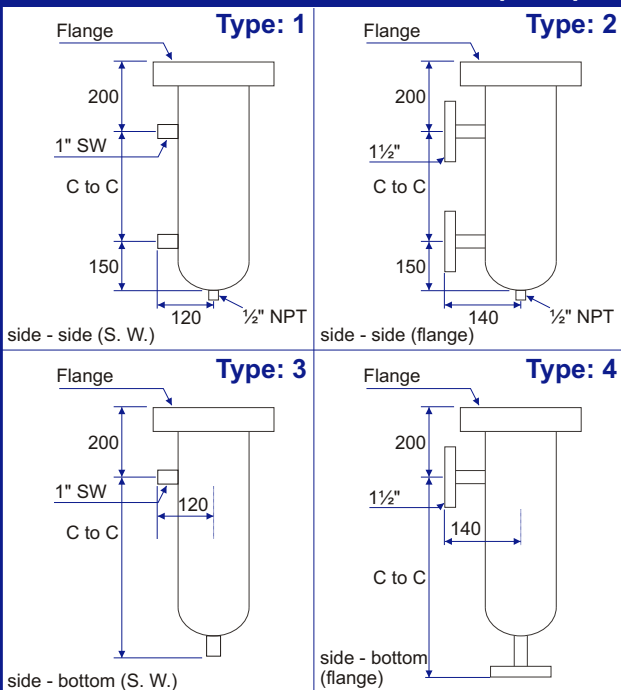
**CHAMBER MATERIAL**  
 Carbon Steel  
 SS 304  
 SS 316  
 Other

1  
 2  
 3  
 X

**C to C LENGTH**  
 (please specify)

**CHAMBER SCH # (PRESSURE RATING)**  
 (Please specify)

## CHAMBER DIMENSIONS (mm)



## YOUR SOURCE FOR LEVEL INSTRUMENTS



**INDUMART INC.**

1-15 W. Pearce St., Richmond Hill, Ont. L4B 1H6, Canada  
 Phone: (905) 707-9998 Fax: (905) 707-8484 E-mail: Sales@Indumart.com