



# SERIES: P73

**Dial:** 2½", 3¼", 4", 4½", 6"  
**Accuracy:** 2%

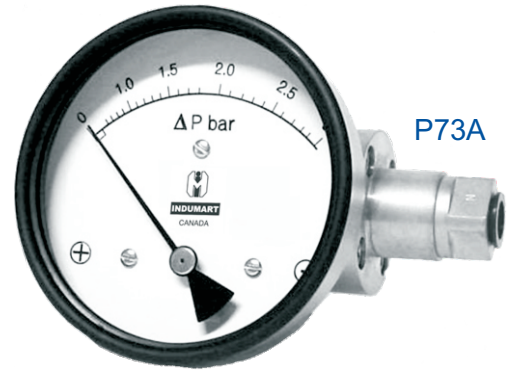
**Reed Alarm Contacts (option)**



P73D



P73B



P73A

## DESCRIPTION

Indumart *P73 Series* Diaphragm Type Differential Pressure Gauges are designed to display the pressure differential of two separate pressure inputs on a dial indicator.

For switching action, these gauges can be equipped with Reed switches to initiate alarms or to control the process. Up to two SPDT or SPST relays may be installed for high and low limits.

Models "A" and "B" may be filled with glycerin to ensure smooth pointer movement and to protect the moving parts against wear.

Indumart *P73 Series* are mostly used for monitoring filters, pumps and valves in the water, air, natural gas and gasoline systems, and also for measuring flow rates with venturi, orifice or pitot tubes. As standard, they are suitable for direct mounting, while models "A" and "B" may be ordered with a bracket for pipe or surface mounting.

## SPECIFICATIONS

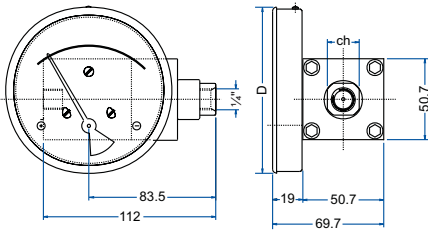
<b>Accuracy</b>	±2% of full scale dial
<b>Body Material</b>	St. Steel, aluminum;
<b>Wetted Parts</b>	Body material, 304SS spring, PTFE, ceramic magnet
<b>Dial Case</b>	St. steel case and flange
<b>Seal</b>	Buna-N (std), Viton (option)
<b>Window</b>	Glass (std), acrylic, hard glass
<b>Switch</b>	One or two SPST or SPDT; Field adjustable from 20% to 90% of the range
<b>SPST</b>	10 VA maximum (AC or DC) 50 VAC or 100 VDC max. 0.5 Amp. AC or DC max.
<b>SPDT</b>	3 VA maximum (AC or DC) 28 VAC or 28 VDC max. 0.25 Amp. AC or DC max.
<b>Media Temperature</b>	80°C / 175°F maximum
<b>Environ. Protection</b>	IP65 for the gauge & switch
<b>Migration of Media</b>	None

Specifications may change without prior notice.

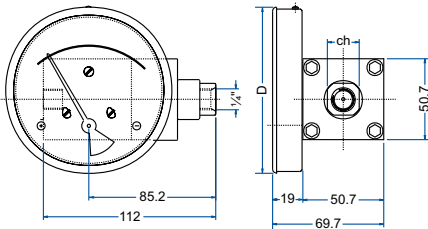
Model	P73A	P73B	P73D
<b>Range</b>	0...5 to 0...100 psi	0...30 In.H2O to 0...60 psig	0...25 to 0...600 mmH2O
<b>Measurement Units</b>	kg/cm <sup>2</sup> , mbar, mmH2O, In.H2O, psi	kg/cm <sup>2</sup> , bar, mbar, kPa, psi	mmH2O, mbar, In.H2O, kPa
<b>Max. Static Pressure</b>	3000 psi / 200 bar	1500 psi / 100 bar	500 psi / 35 bar
<b>Dial Size</b>	2½", 3¼", 4", 4½", 6"		3¼", 4", 4½", 6"
<b>Liquid Filling</b>	Glycerine-filled (option)		No liquid filling
<b>Porting</b>	In-line (sides), back, bottom		
<b>Connection</b>	¼" female NPT or BSP		

## DIMENSIONS (mm)

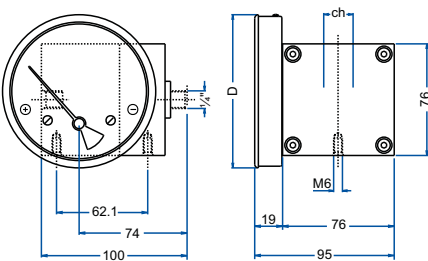
### Standard Case - Model P73A



### Standard Case - Model P73B



### Standard Case - Model P73D



Dial	2½"	3¼"	4"	4½"	6"
D	66	83	104	120	154
ch	20	20	20	20	20

### Standard Ranges - Model P73D

mmH <sub>2</sub> O	25	50	125	250	600
IN.H <sub>2</sub> O	1	2	5	10	25
mbar	-	5	-	25	60
kPa	0.25	0.5	1.25	2.5	6

### Standard Ranges - Model P73A

kg/cm <sup>2</sup>	0.25	-	0.5	0.75	1	-	2	2.5	-	4	7
bar	0.25	-	0.5	0.75	1	-	2	2.5	-	4	7
mbar	250	-	-	750	-	-	-	-	-	-	-
psi	-	5	7	-	15	25	30	-	40	60	100
kPa	25	-	50	75	100	-	200	250	-	400	700

### Standard Ranges - Model P73B

kg/cm <sup>2</sup>	0.075	0.25	-	0.5	0.75	1	-	1.6	2	2.5	3	-	4
bar	0.075	0.25	-	0.5	0.75	1	-	1.6	2	2.5	3	-	4
mbar	75	250	-	-	750	-	-	-	-	-	-	-	-
psi	1	-	5	8	-	15	20	25	30	-	40	50	60
kPa	-	25	-	50	75	100	-	160	200	250	300	-	400

## ORDER CODES

### Model P73

#### TYPE

Rolling Diaphragm  
Small Diaphragm  
Low Pressure

A  
B  
D

#### CONNECTION

In-line (standard)  
Back  
Bottom

L  
K  
T

#### DIAL SIZE

2½" (63 mm) not for model "D"  
3¼" (80 mm)  
4" (100 mm)  
4½" (115 mm)  
6" (160 mm)

2  
3  
4  
5  
6

#### FUNCTION

Gauge  
Switch  
Gauge + Switch

G  
S  
W

#### BODY MATERIAL

Aluminum (Anodized)  
316 St. Steel

A  
S

#### CASE

304 St. Steel (standard)  
304 St. Steel (standard flange)

S  
F

#### CONNECTION

NPT female  
BSP female

N  
B

#### WINDOW

Glass (standard)  
Acrylic  
Hard Glass

G  
A  
H

#### SEALS

Buna N (standard)  
Viton

B  
V

#### REED SWITCH (not available for back or bottom connection units)

None  
One SPST Switch  
Two SPST Switches  
One SPDT Switch  
Two SPDT Switches (not available for model P73D)

0  
1  
2  
3  
4

#### LIQUID FILLING

Not required  
Glycerine filled (not available for model P73D)

D  
F

Please specify the range from the Tables.

**Other ranges  
are available,  
on request.**