



SERIES: PTF112

Thin Film Pressure Sensor

- LONG SERVICE LIFE AND GREAT STABILITY
- EXCELLENT ALTERNATING LOAD RESISTANCE
- ST. STEEL HOUSING & PROCESS CONNECTION
- PRESSURE PEAK DAMPING ELEMENT
- ABSOLUTE OR GAUGE PRESSURE
- RANGES UP TO 10000 PSI OR 600 BAR
- TEMPERATURE COMPENSATION
- ELECTROMAGNETIC PROTECTION

**0.2%
ACCURACY**



INTRODUCTION

Indumart PTF112 Pressure Transmitters are very accurate and reliable instruments which convert pressure inputs to current or voltage signals. These pressure transmitters with thin-film strain gauge are equipped with a damping element to direct away pressure peaks or liquid hammering from their sensors; hence showing an exceptionally high level of resistance to mechanical shocks.

Other advantages of PTF112 Series are the built-in temperature compensation for up to 85°C, operating temperature of up to 125°C, typical response time of 1 ms, and accuracy of 0.2%.

The industrial, heavy-duty PTF112 meets the requirements for a great level of electromagnetic compatibility (EMC) protection.

Output	Load Resistance	I _{supply}	U _{supply}
4 - 20 mA	(U _{supply} - 10V) / 0.2 A		10 - 34 VDC
0 - 5 VDC	≥1.0 kΩ	≤15 mA	10 - 30 VDC
0 - 10 VDC	≥2.0 kΩ	≤20 mA	15 - 30 VDC
1 - 6 VDC	≥1.0 kΩ	≤15 mA	12 - 30 VDC
0 - 20 mA	≤0.5 kΩ	≤35 mA	24 VDC ± 20%

Code	Range	Over Range	Burst Pressure
01	0...1 bar	2 bar	30 bar
03	0...2.5	5	100
04	0...4	8	100
05	0...6	12	100
06	0...10	20	200
07	0...16	32	200
08	0...25	50	300
09	0...40	80	300
10	0...60	120	500
11	0...100	200	500
13	0...250	500	1000
14	0...400	800	1500
15	0...600	1200	2000
21	0...15 psi	30 psi	1000 psi
22	0...30	60	2500
23	0...60	120	2500
24	0...100	200	2500
25	0...150	300	4500
26	0...200	400	4500
27	0...300	600	4500
28	0...400	800	4500
29	0...500	1000	4500
30	0...600	1200	4500
31	0...750	1500	4500
32	0...1000	2000	7500
33	0...1500	3000	7500
34	0...2000	4000	7500
35	0...3000	6000	7500
36	0...5000	10000	15000
37	0...7500	15000	22000
38	0...10000	18000	30000

Please use XX code for vacuum, compound and special ranges.
Ex.: -1...4 bar, 0...5 bar, 0...12 bar, -10...30 psi, 0...120 psi, etc.

SPECIFICATIONS

Accuracy	<0.2% of full scale
Sensor	17-4 PH, AISI 630
Housing	AISI 304
Process Connection	1/4" (male / female), 1/8" female 7/16"-20UNF (male / female)
Pressure Type	Absolute; Positive; Negative
Response time	1 ms typ. (10...90% of scale)
Output Signals	4-20 or 0-20 mA, 0-5 VDC, 1-6 VDC, 0-10 VDC
Power Supply	24 VDC
Insulation Resistance	>10MΩ, 250 VDC
Electric Strength	250 VAC, 50 Hz
Short Circuit Current	50 mA approximately

Electric Connection	Plug with junction box, PVC or PUR Cable
Temp. Coefficient	
Zero & Span	±0.03% / k / FS (typical) ±0.05% / k / FS (maximum)
Medium Temperature	-25...125°C
Temp. Compensation	-25...85°C
Environ. Protection	IP67 or IP65
Vibration	6 g (20...2000 Hz)
Shock	50 g / 11 ms
EMC Emission	EN 50081-1
Immunity	EN 50082-2
Weight	60 g (0.13 lb)

Indumart reserves the right to change the specifications without prior notice.

ORDER CODES

Model PTF112 -

RANGE

Select a range from the table (01 to 38)

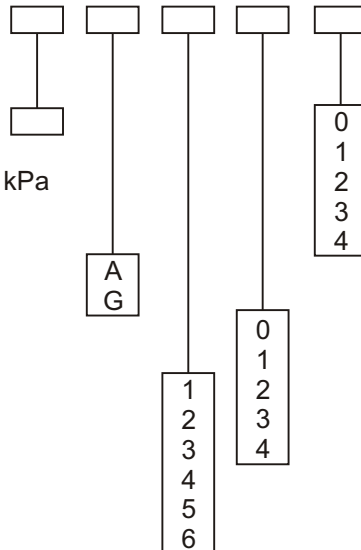
for special ranges use XX. Ex: -100...+400 kPa

PRESSURE

Absolute
Gauge

PROCESS CONNECTION

G 1/8" female
1/4" NPT male
G 1/4 male
G 1/4 female
7/16"-20UNF male
7/16"-20UNF female



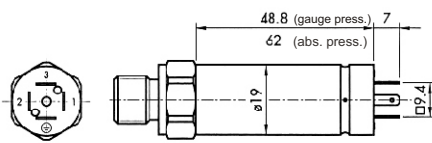
OUTPUT SIGNAL

4 - 20 mA
0 - 5 VDC
0 - 10 VDC
1 - 6 VDC
0 - 20 mA

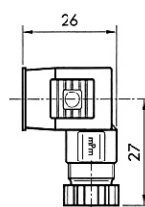
ELECTRICAL CONNECTION

DIN 43650-C (IP65)
DIN43650-A (IP65)
M12x1 5-pol (IP67)
1.5 m, PVC Cable (IP67)
1.5 m, PUR Cable (IP67)

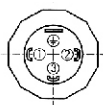
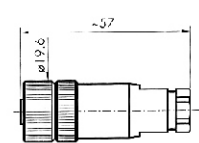
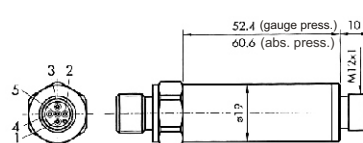
DIMENSIONS (mm)



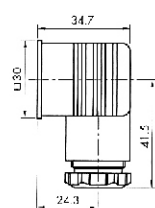
DIN43650-C



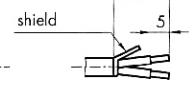
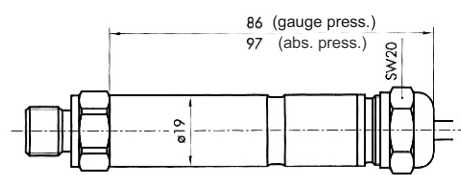
M12x1, 5-pol



DIN43650-A



Cable



INDUMART INC.

1-15 W. Pearce St., Richmond Hill, Ont. L4B 1H6, Canada
Phone: (905) 707-9998 Fax: (905) 707-8484 E-mail: Sales@Indumart.com